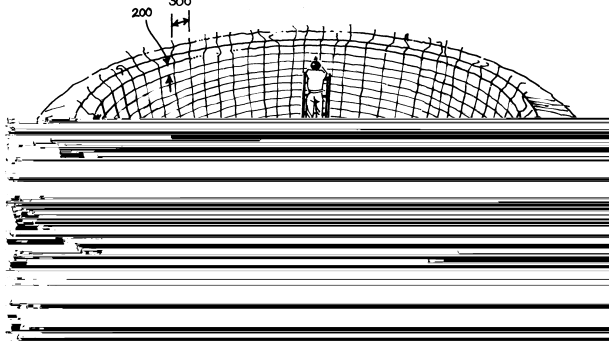


Buried and semi-submerged water tanks

80 3

7

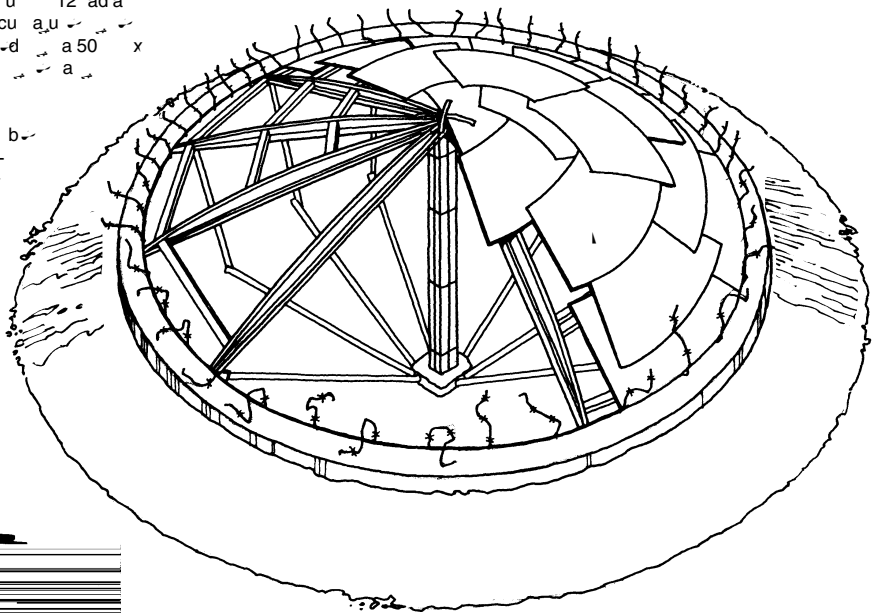
N-x da, a a a ba b-d a u 50 a .T ac
 b-300 a u db-200 .T add ada a ax u ac
 ca a-b c a-d).
 N c d a a-a a c c (25
 a u) a a-a 200 b adac a .l u a,a , a
 a adac xca a a d c uc ac a .



8

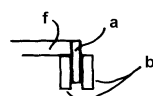
A 30 1:3 a c
 d-da, add a a d, .Cu
 a a u ca
 T a-c-d u -db a
 50 -da a a -d-
 c -e 1 ab a
 a u d .La, b a
 ac, a a add
 b -acc- c -a
 c -c .P -a
 c -d, a c -ad
 ad : c c
 a .
 Fx -c -d a ac
 ab u c -e 25
 a-ca a

F u () -e, a u 12 ada
 b (), 150 x 25 a d -cu a u
 (a ca ad u 6.25), d a 50 x
 100 b () -ac d a a
 ca b () -d
 S a d-d ada b
 a a -e 10
 da -ba () -d u d d
 Su d -a a
 ca () 1.9
 Na -50 x 50 b ()
 -50 x 100 ada b
 a d u
 -d () u d
 u ca b-cu
 a -d 210- d u (u d 48),
 bu u a d a a cu
 3.06 ad u
 -d a -cu a

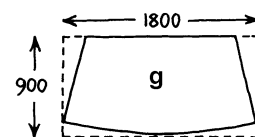


g a

Cu -ab u, 50 add, a ()
 (a -a -d-a) a d u ca
 d a u a d
 a -a cu d .W ; bu
 d a, uca
 u a



Cross section of radial timbers



steel sheets

